

Quick Start Guide for VALCam with AutoCrop

This quick start guide assumes the user is familiar with standard **VALCam** operation and installation procedures. Only the new features are described in this document. Please refer the user guide to complete instructions.

New features:

Adjustable cropping control for live preview and capture.

Cropping dimensions can be adjusted in real time to any desired format. You can now take your images directly from the **VALCam** to your photo ID card, bypassing your application's cropping box.

VALCam Configuration Utility

Set custom crop dimensions for your specific needs. A password can also be set to allow only authorized user to change settings.

Variable speed camera motion control

The **SHIFT** and **CONTROL** keys can be used to speed up or slow down camera motion

Compact User Interface

A new, more efficient user interface allows previewing and displaying captured images at full size.

Installation

If the **VALCam** is not installed refer to the user guide for installation instructions. After installation run the SetupXXXX.exe that is included with this zip archive. The previous software does not need to be uninstalled.

Operation:

Click on **START->PROGRAMS->VALCam Flash** and start the application.

The **VALCAM ID** capture control box will appear. **If you receive an error message or the capture control box does not appear displaying live video, consult the troubleshooting guide in the user manual.**



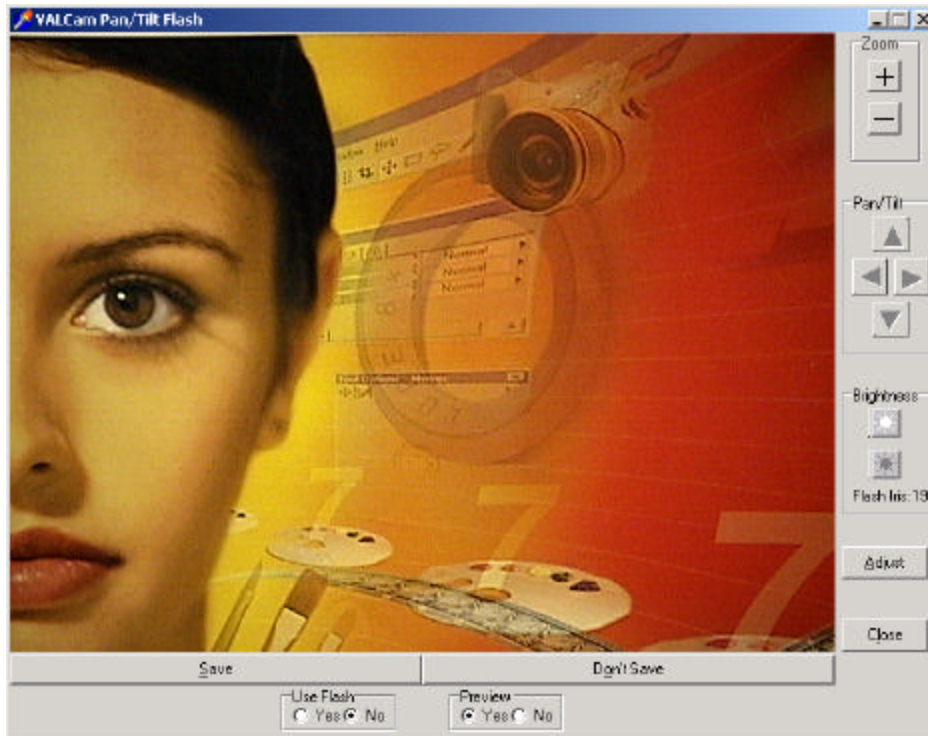
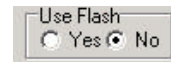
Camera motion controls

Camera motion speed can be increased by holding down the **SHIFT** key when panning, tilting or zooming. Similarly holding down the **CONTROL** key can decrease the camera speed.

1. Use the **-**, **^**, **~**, **@** keys to control pan/tilt operation. Hold down keys to initiate action and release keys to stop action. **(Pan/Tilt/Zoom Camera only)** Use the **+** and **-** keys to Zoom in and Zoom out.
2. Hold down the **CONTROL** key to speed camera motion. Hold down the **SHIFT** key to slow camera motion.
3. Place mouse cursor over the camera motion buttons. Hold down the left mouse button to initiate action. Hold down the **CONTROL** key to speed camera motion. Hold down the **SHIFT** button to slow camera motion.

Taking a capture

1. Set the Flash off with the Use Flash Yes/No control
2. Frame subject with camera motion controls
NOTE: Always zoom in as tight as possible for highest quality captures
Adjust the brightness control for optimum image exposure
3. Click the **Capture** button (hit the “C” key) below the live video display
4. The captured image will replace the live video

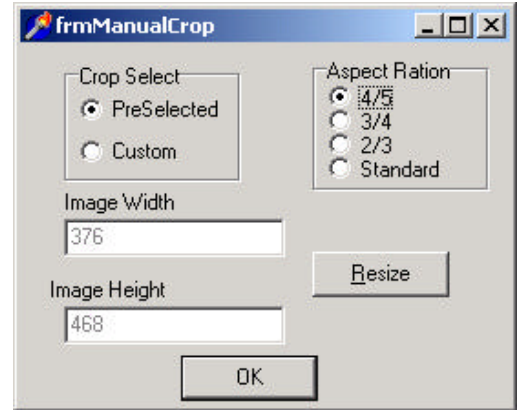


5. Click the **“Save”** button (or hit the “S” key) to save the image.
Note: If you are using the **VALCam** in your photo-id software the image is handed off to your badging app. Otherwise the image is put on the clipboard.
6. Click the **“Don’t Save”** button to take another capture.

Setting Crop Dimensions

The **VALCam** now supports user defined cropping entries. The preview and captured image will conform to these user-defined values. If these values are set to the aspect ratio of the picture box in your card design you can bypass the crop box in your badging application.

1. Click the **Adjust** button
2. Click the **Manual Crop** radio button in the **Capture Size** box. Verify that the **PreSelected** radio button is clicked
3. Select different **Aspect Ratios** radio buttons and note the changes in the live video aspect ratio. The horizontal and vertical dimensions are indicated in the “**Image Width**” and “**Image Height**” input boxes.
The **Horizontal Size/Vertical Size** determines aspect ratios
The “**Standard**” selection is a **4/3** aspect ratio displaying a non-cropped image.
4. Click the “**Custom**” radio button in the “**Crop Select**” box.
You can now enter specific values for **Image Width** and **Image Height**.
Image Width must be less than 641 and **Image Height** must be less than 481.
After the **Image Width** and **Image Height** values have been entered, click the **Resize** button to crop the live display in real time.
5. **Note: Always use the highest values for Image Width and Image Height for any given aspect ratio best image quality**



VALCam Configuration Utility

The **VALCam Configuration Utility** provides the capability to set password access to the **VALCam** adjust dialog box. In addition, custom crop values and names can be set with this utility.

Go to **Start->Programs->VALCamFlash->VALCam Configuration Utility**

Name	Width	Height
4/5	376	468
3/4	351	468
2/3	312	468
Standard	624	468

Aspect Ratio

4/5

3/4

2/3

Standard

If a password **has** been previously set, enter that password. If a password **has not** been set, enter **3782**

If you wish to change the password, enter and confirm your new password.

Enter names for the crop radio buttons. Enter image width and image height values.

Click **Apply** to enter new settings. Click **OK** to apply new setting and exit. Click **Cancel** to exit not save new setting.

Any feedback would be appreciated.

Thanks

Randy Feingersh

Video Associates Labs